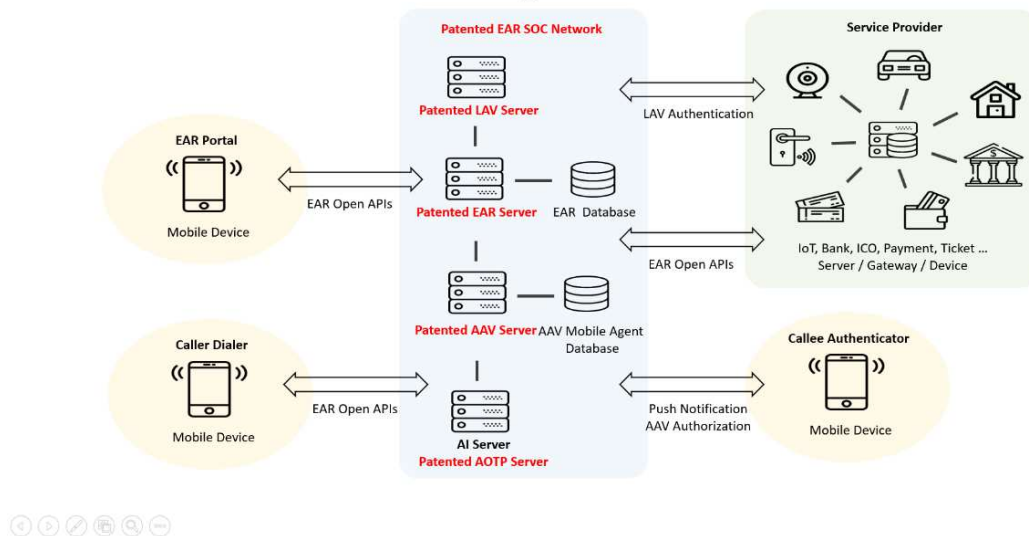


OmniBud ZT Solution

The Sophisticated Combination of EAR and AOTP Technologies

Patented EAR ZT Technologies



Company Profile

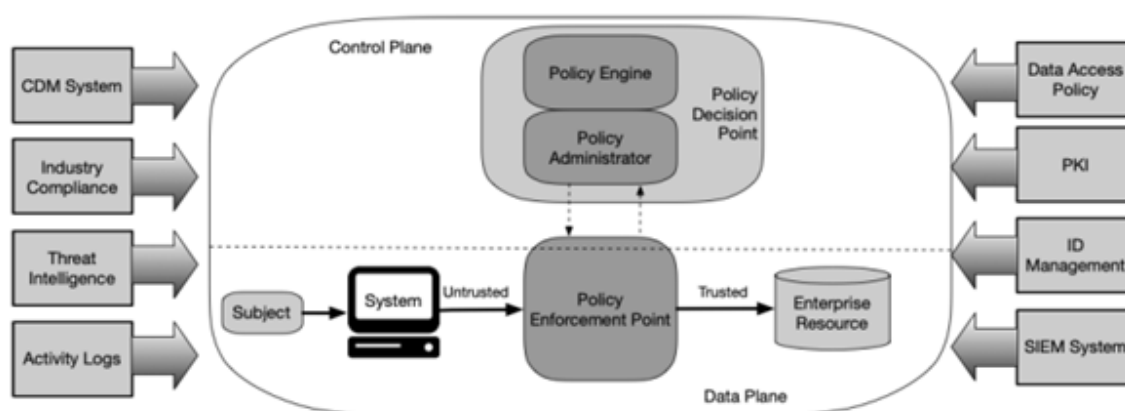
OmniBud was established in 2003 and registered in B.V.I. as a professional patent and software licensing company with core R&D and hardware partners in Taiwan. OmniBud owns the unique Zero Trust Solution named OmniBud ZT which consists of a portfolio of technologies with patents in major countries. The solutions are applicable in a wide range of areas, such as smart factory, smart office, smart government, smart hospital, smart city, smart home, smart vehicle, smart banking, smart retail... etc.

The major patented technologies include:

- 3 Mode Active One Time Password Technology
- E.164 Authentication Routing Technology
- Access Authorization Verification Technology
- Legitimate Authentication Verification Technology
- E.164 Authentication Routing Security Operation Center Technology

Products and Solutions

Based on patented EAR ZT technologies, OmniBud provide various OmniBud ZT solutions with flexible business models to mobile operators, cloud service providers, security solution providers, banks, IoT manufactures, application vendors and system integration partners. The products includes ZT core components, ZT data source components, ZT enabled applications as below following the definition of NIST (Core Zero Trust Logical Components figure [from Zero Trust Architecture: NIST Special Publication 800-207](#)).



The OmniBud ZT Core Components include:

- [PDP \(Policy Decision Point\) - OmniBud ZT Policy Engine](#)
- [PDP \(Policy Decision Point\) - OmniBud ZT Policy Administrator](#)
- PEP (Policy Enforcement Point) - OmniBud ZT Node
- PEP (Policy Enforcement Point) - OmniBud ZT Proxy
- PEP (Policy Enforcement Point) - OmniBud ZT Bridge
- PEP (Policy Enforcement Point) - OmniBud ZT Controller
- PEP (Policy Enforcement Point) - OmniBud ZT Router
- PEP (Policy Enforcement Point) - OmniBud ZT Agent
- PEP (Policy Enforcement Point) - OmniBud ZT Customized Terminal

We have 7 types of PEP to build different kinds of Zero Trust Architectures that meets customers' various needs including local devices protection, cloud service protection, internet protection, intranet protection, indoor application protection, outdoor application protection, office application protection, commerce application protection... etc..

The OmniBud ZT Data Source Components include:

- ID management system - OmniBud ZT 3 Mode AOTP Platform *
- ID management system - OmniBud ZT FIDO2 Server *
- Threat intelligence feed - OmniBud ZT EAR SOC System *
- Enterprise public key infrastructure (PKI) - OmniBud ZT JWT Module *
- Security information and event management system - OmniBud ZT EAR SOC System *

We have the * marked fundamental Zero Trust Data Source Components above integrated with Zero Trust Core Components in OmniBud ZT Platform already for customers' convenience. Other 3rd party Zero Trust Data Source components like Continuous diagnostics and mitigation (CDM) system, Industry compliance system, Network and system activity logs, Data access policies or additional data source components can be integrated following customers' needs.